

# ENJOY YOUR LIFE

**ZAHRA II**  
APARTMENTS

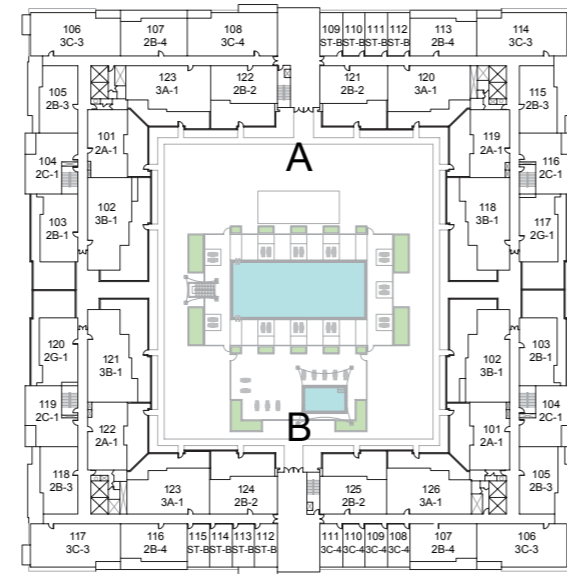
TOWN  
**SQUARE**  
DUBAI

NSHAMA<sup>®</sup>

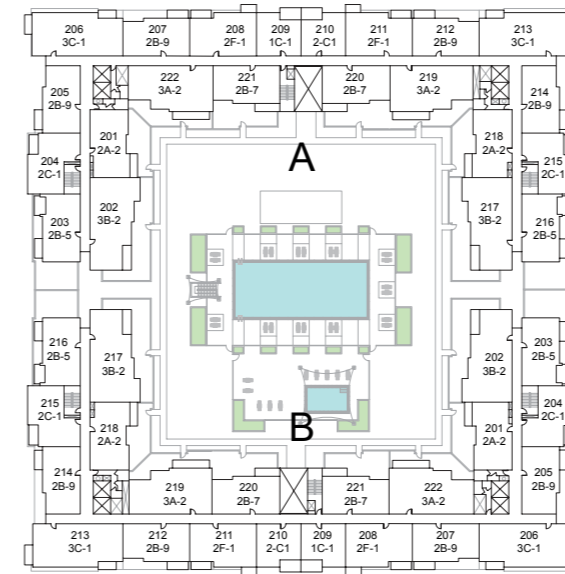
# TOWN SQUARE DUBAI

# ZAHRA II APARTMENTS

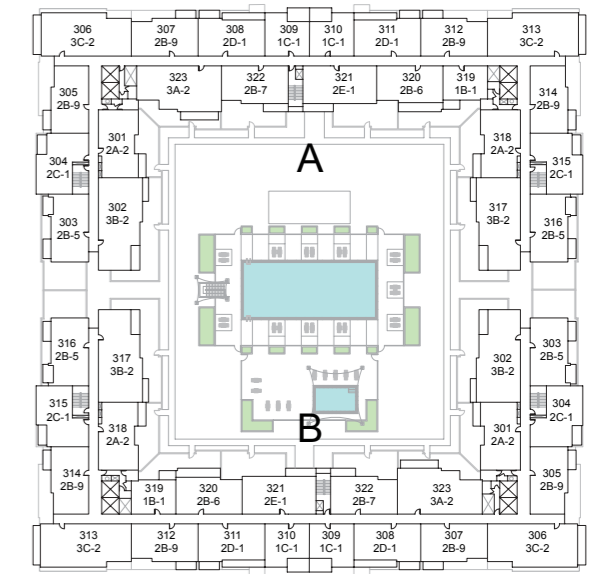
ZAHRA TOWNHOUSES ▲



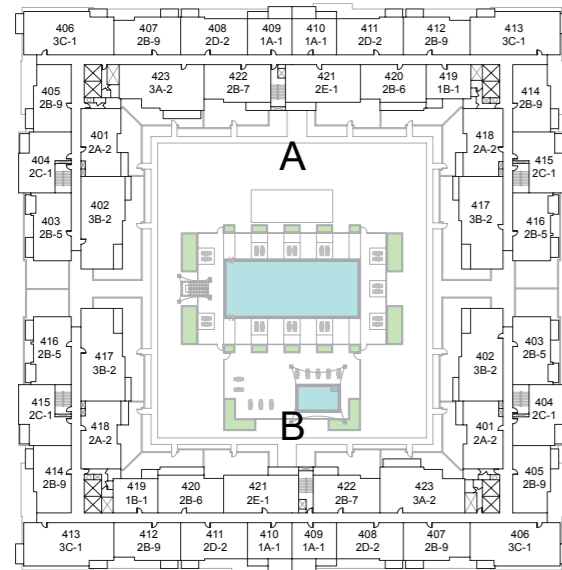
Level 01



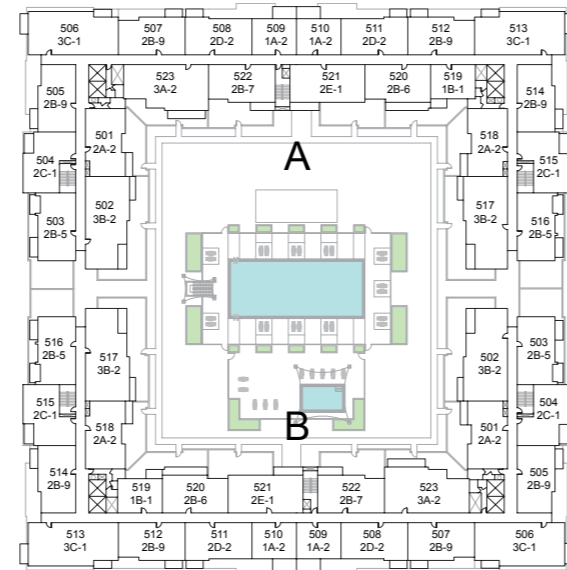
Level 02



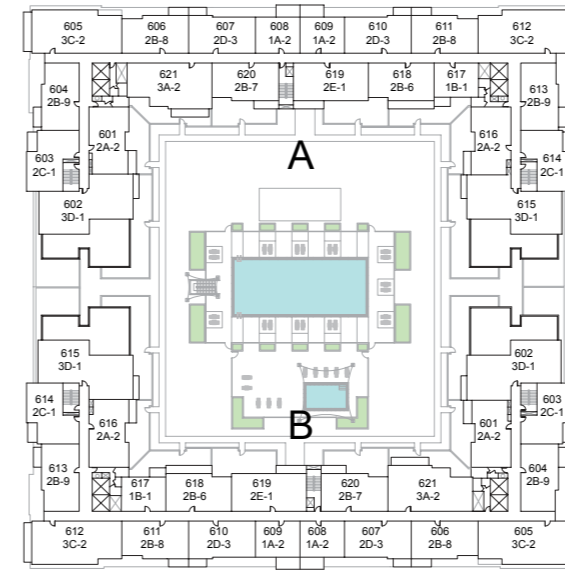
Level 03



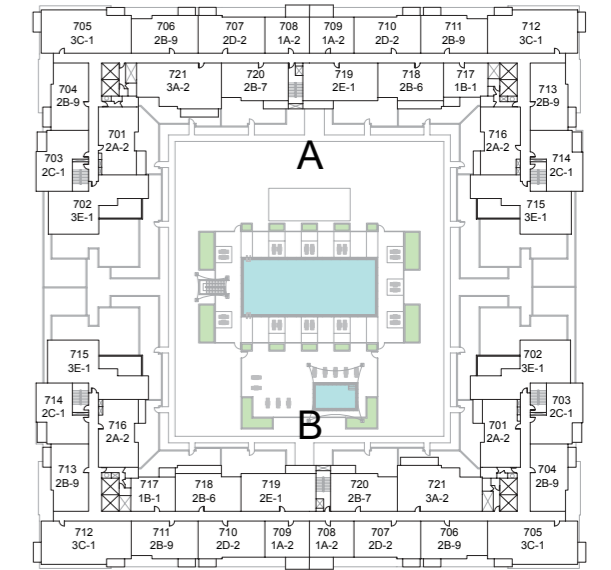
Level 04



Level 05



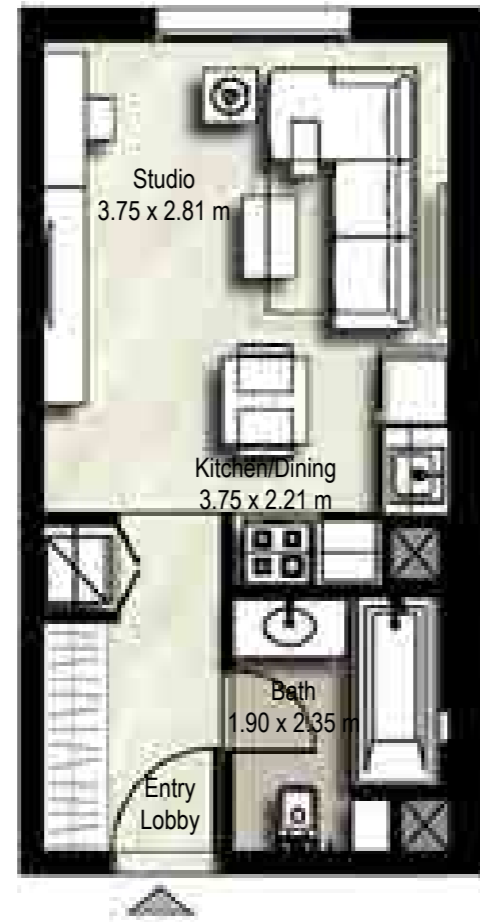
Level 06

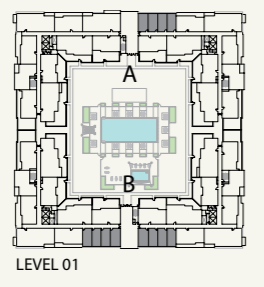


Level 07

# STUDIO UNIT TYPE ST-B

SUITE: 30.38 sq.m. / 327 sq.ft.  
BALCONY: 0.00 sq.m. / 0 sq.ft.  
TOTAL BUILT UP AREA: 30.38 sq.m. / 327 sq.ft.



BLOCK	A	B	 LEVEL 01
UNITS	109,110 111,112	108,109 110,111 112,113 114,115	

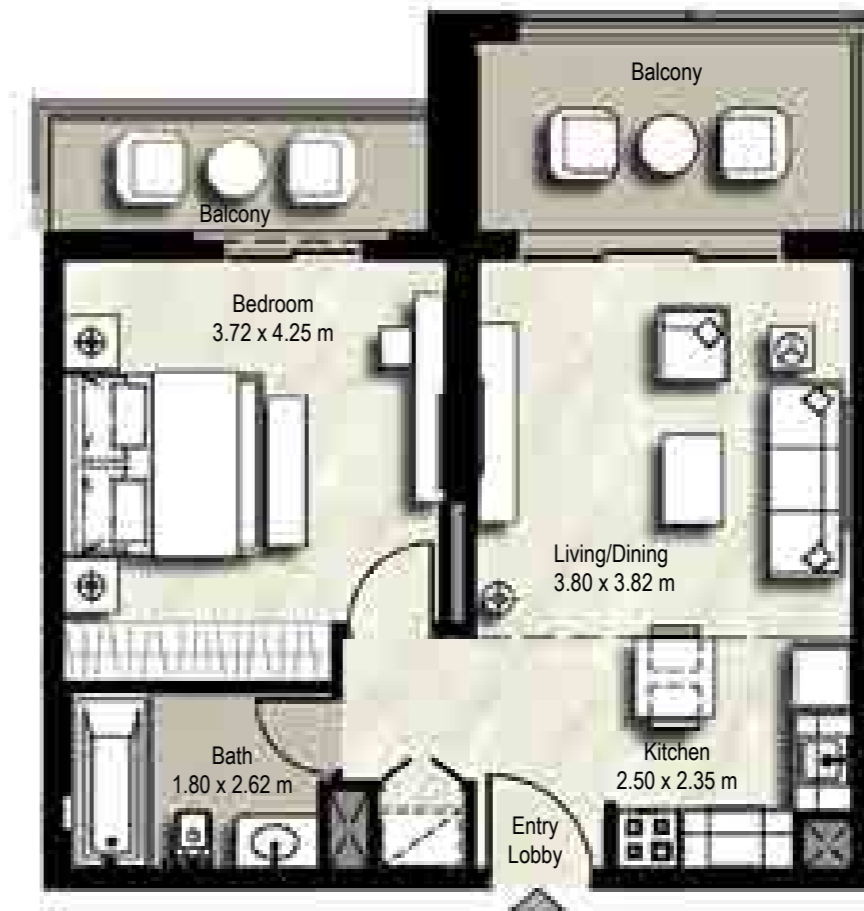
Disclaimer  
1. All room dimensions are in metric and measured to structural elements and exclude wall finishes and construction tolerances. 2. All dimensions have been provided by our consultant architects. 3. All materials, dimensions, drawings features and amenities are approximate at the time of printing. 4. Actual area may vary from stated area and unit direction may vary from unit to unit. Drawings not to scale E&EO. The developer reserves the right to make revisions to the floor plans and any features, materials, dimensions, drawings and amenities mentioned in this brochure without notice.

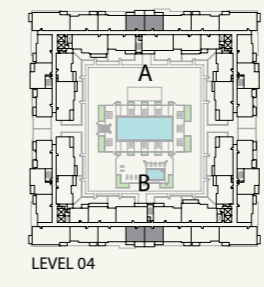
# ZAHRA II APARTMENTS

# TOWN SQUARE DUBAI

# 1 BEDROOM UNIT TYPE 1A-1

SUITE: 51.14sq.m. / 550 sq.ft.  
BALCONY: 13.53 sq.m. / 146 sq.ft.  
TOTAL BUILT UP AREA: 64.67 sq.m. / 696 sq.ft.



BLOCK	A&B	 LEVEL 04
UNITS	409,410	

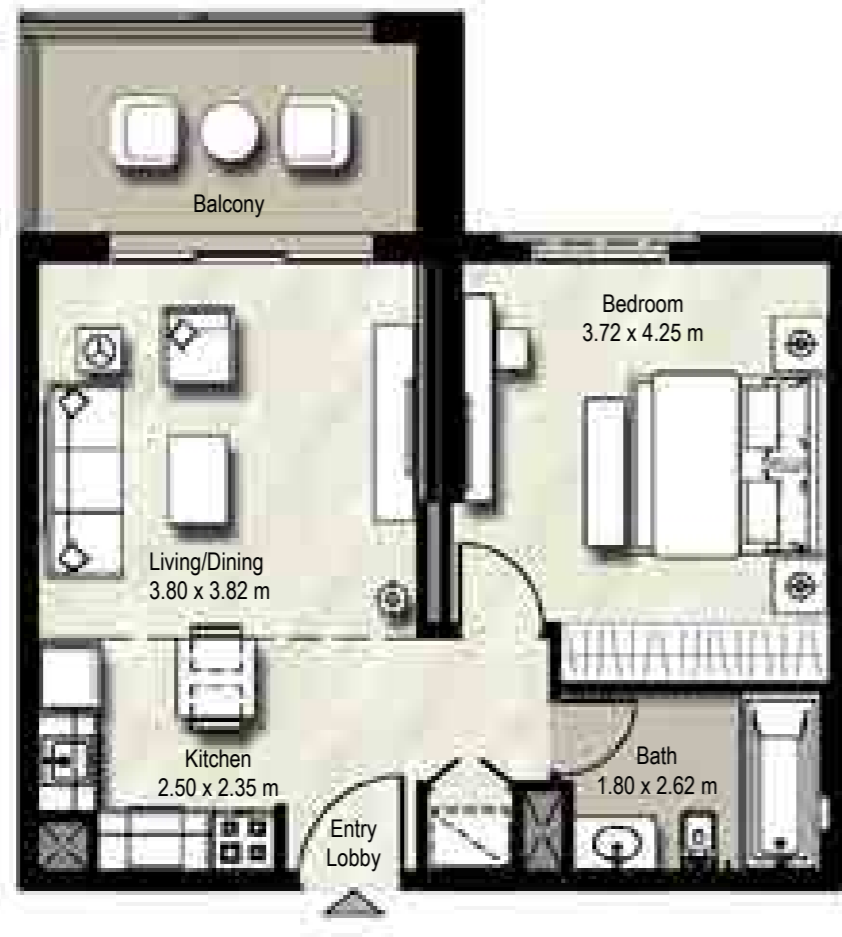
Disclaimer  
1. All room dimensions are in metric and measured to structural elements and exclude wall finishes and construction tolerances. 2. All dimensions have been provided by our consultant architects. 3. All materials, dimensions, drawings features and amenities are approximate at the time of printing. 4. Actual area may vary from stated area and unit direction may vary from unit to unit. Drawings not to scale E&EO. The developer reserves the right to make revisions to the floor plans and any features, materials, dimensions, drawings and amenities mentioned in this brochure without notice.

# ZAHRA II APARTMENTS

# TOWN SQUARE DUBAI

# 1 BEDROOM UNIT TYPE 1A-2

SUITE: 51.1 sq.m. / 550 sq.ft.  
BALCONY: 7.67 sq.m./ 83 sq.ft.  
TOTAL BUILT UP AREA: 58.77 sq.m./ 633 sq.ft.



# ZAHRA II APARTMENTS

## TOWN SQUARE DUBAI

# 1 BEDROOM UNIT TYPE 1B-1

SUITE: 48.16 sq.m. / 518 sq.ft.  
BALCONY: 4.93 sq.m. / 53 sq.ft.  
TOTAL BUILT UP AREA: 53.09 sq.m. / 571 sq.ft.



# ZAHRA II APARTMENTS

## TOWN SQUARE DUBAI

BLOCK	A&B	<p>LEVEL 05-07</p>
UNITS	509,510 608,609 708,709	

Disclaimer  
1. All room dimensions are in metric and measured to structural elements and exclude wall finishes and construction tolerances. 2. All dimensions have been provided by our consultant architects. 3. All materials, dimensions, drawings features and amenities are approximate at the time of printing. 4. Actual area may vary from stated area and unit direction may vary from unit to unit. Drawings not to scale E&EO. The developer reserves the right to make revisions to the floor plans and any features, materials, dimensions, drawings and amenities mentioned in this brochure without notice.

BLOCK	A&B	<p>LEVEL 03-07</p>
UNITS	319,419 519,617 717	

Disclaimer  
1. All room dimensions are in metric and measured to structural elements and exclude wall finishes and construction tolerances. 2. All dimensions have been provided by our consultant architects. 3. All materials, dimensions, drawings features and amenities are approximate at the time of printing. 4. Actual area may vary from stated area and unit direction may vary from unit to unit. Drawings not to scale E&EO. The developer reserves the right to make revisions to the floor plans and any features, materials, dimensions, drawings and amenities mentioned in this brochure without notice.

# 1 BEDROOM UNIT TYPE 1C-1

SUITE: 56.67 sq.m. / 610 sq.ft.  
BALCONY: 7.54 sq.m. / 81 sq.ft.  
TOTAL BUILT UP AREA: 64.21 sq.m. / 691 sq.ft.



BLOCK	A&B	
UNITS	209,210 309,310	

Disclaimer  
1. All room dimensions are in metric and measured to structural elements and exclude wall finishes and construction tolerances. 2. All dimensions have been provided by our consultant architects. 3. All materials, dimensions, drawings features and amenities are approximate at the time of printing. 4. Actual area may vary from stated area and unit direction may vary from unit to unit. Drawings not to scale E&EO. The developer reserves the right to make revisions to the floor plans and any features, materials, dimensions, drawings and amenities mentioned in this brochure without notice.

# ZAHRA II APARTMENTS

## TOWN SQUARE DUBAI

# 2 BEDROOMS UNIT TYPE 2A-1

SUITE: 80.72 sq.m. / 869 sq.ft.  
BALCONY: 48.52 sq.m. / 522 sq.ft.  
TOTAL BUILT UP AREA: 129.24 sq.m. / 1,391 sq.ft.



BLOCK	A	B	
UNITS	101,119	101,122	

Disclaimer  
1. All room dimensions are in metric and measured to structural elements and exclude wall finishes and construction tolerances. 2. All dimensions have been provided by our consultant architects. 3. All materials, dimensions, drawings features and amenities are approximate at the time of printing. 4. Actual area may vary from stated area and unit direction may vary from unit to unit. Drawings not to scale E&EO. The developer reserves the right to make revisions to the floor plans and any features, materials, dimensions, drawings and amenities mentioned in this brochure without notice.

# ZAHRA II APARTMENTS

## TOWN SQUARE DUBAI

## 2 BEDROOMS UNIT TYPE 2A-2

SUITE: 80.66 sq.m. / 868 sq.ft.  
BALCONY: 6.47 sq.m. / 70 sq.ft.  
TOTAL BUILT UP AREA: 87.13 sq.m. / 938 sq.ft.



## ZAHRA II APARTMENTS

### TOWN SQUARE DUBAI

## 2 BEDROOMS UNIT TYPE 2B-1

SUITE: 78.42 sq.m. / 844 sq.ft.  
BALCONY: 68.96 sq.m. / 742 sq.ft.  
TOTAL BUILT UP AREA: 147.38 sq.m. / 1,586 sq.ft.



## ZAHRA II APARTMENTS

### TOWN SQUARE DUBAI

BLOCK	A&B
UNITS	201,218
	301,318
	401,418
	501,518
	601,616
	701,716

BLOCK	A&B
UNITS	103

Disclaimer  
1. All room dimensions are in metric and measured to structural elements and exclude wall finishes and construction tolerances. 2. All dimensions have been provided by our consultant architects. 3. All materials, dimensions, drawings features and amenities are approximate at the time of printing. 4. Actual area may vary from stated area and unit direction may vary from unit to unit. Drawings not to scale E&EO. The developer reserves the right to make revisions to the floor plans and any features, materials, dimensions, drawings and amenities mentioned in this brochure without notice.

Disclaimer  
1. All room dimensions are in metric and measured to structural elements and exclude wall finishes and construction tolerances. 2. All dimensions have been provided by our consultant architects. 3. All materials, dimensions, drawings features and amenities are approximate at the time of printing. 4. Actual area may vary from stated area and unit direction may vary from unit to unit. Drawings not to scale E&EO. The developer reserves the right to make revisions to the floor plans and any features, materials, dimensions, drawings and amenities mentioned in this brochure without notice.



## 2 BEDROOMS UNIT TYPE 2B-2

SUITE: 78.4 sq.m. / 844 sq.ft.  
BALCONY: 58.51 sq.m. / 630 sq.ft.  
TOTAL BUILT UP AREA: 136.91 sq.m. / 1,474 sq.ft.



BLOCK	A	B	
UNITS	121,122	124,125	

Disclaimer  
1. All room dimensions are in metric and measured to structural elements and exclude wall finishes and construction tolerances. 2. All dimensions have been provided by our consultant architects. 3. All materials, dimensions, drawings features and amenities are approximate at the time of printing. 4. Actual area may vary from stated area and unit direction may vary from unit to unit. Drawings not to scale E&EO. The developer reserves the right to make revisions to the floor plans and any features, materials, dimensions, drawings and amenities mentioned in this brochure without notice.

## ZAHRA II APARTMENTS

## TOWN SQUARE DUBAI

## 2 BEDROOMS UNIT TYPE 2B-3

SUITE: 78.16 sq.m. / 841 sq.ft.  
BALCONY: 34.6 sq.m. / 372 sq.ft.  
TOTAL BUILT UP AREA: 112.76 sq.m. / 1,214 sq.ft.



BLOCK	A	B	
UNITS	105,115	105,118	

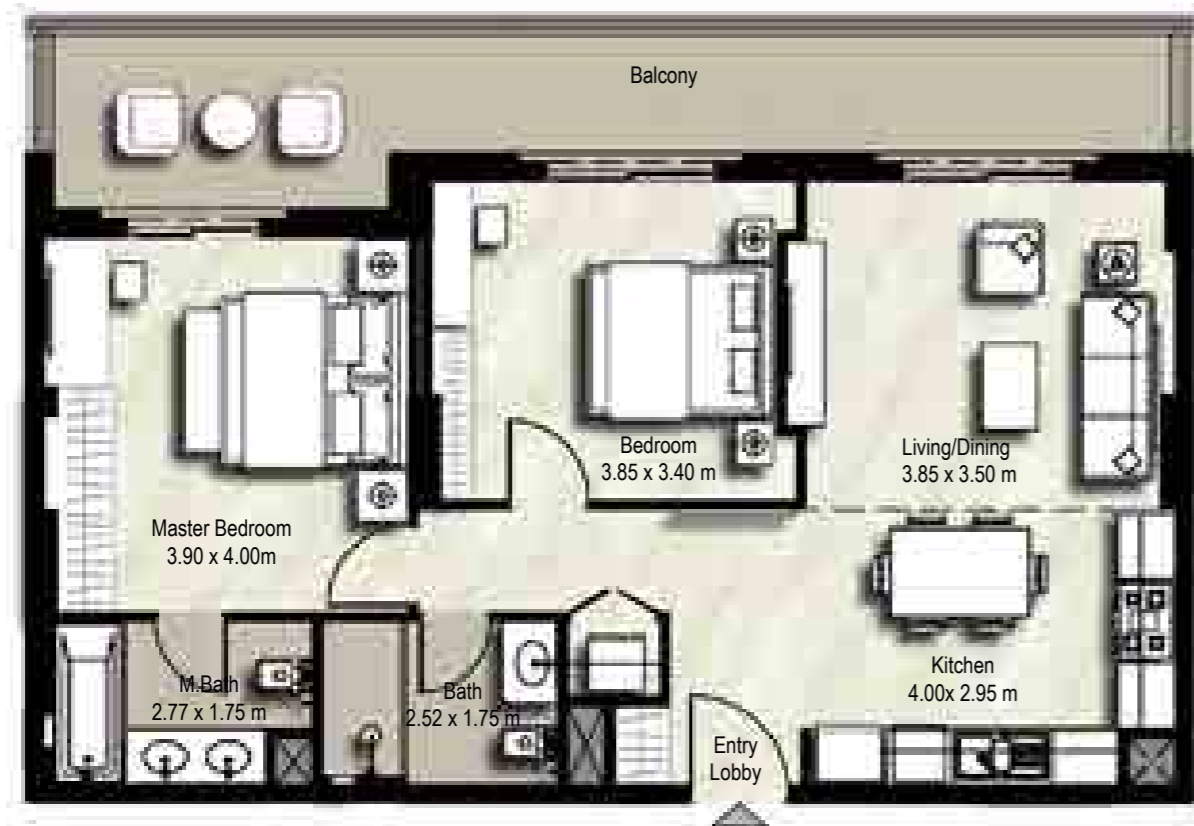
Disclaimer  
1. All room dimensions are in metric and measured to structural elements and exclude wall finishes and construction tolerances. 2. All dimensions have been provided by our consultant architects. 3. All materials, dimensions, drawings features and amenities are approximate at the time of printing. 4. Actual area may vary from stated area and unit direction may vary from unit to unit. Drawings not to scale E&EO. The developer reserves the right to make revisions to the floor plans and any features, materials, dimensions, drawings and amenities mentioned in this brochure without notice.

## ZAHRA II APARTMENTS

## TOWN SQUARE DUBAI

## 2 BEDROOMS UNIT TYPE 2B-4

SUITE: 78.16 sq.m. / 841 sq.ft.  
BALCONY: 21.50 sq.m. / 231 sq.ft.  
TOTAL BUILT UP AREA: 99.66 sq.m. / 1,073 sq.ft.



BLOCK	A	B	<p>LEVEL 01</p>
UNITS	107,113	107,116	

Disclaimer  
1. All room dimensions are in metric and measured to structural elements and exclude wall finishes and construction tolerances. 2. All dimensions have been provided by our consultant architects. 3. All materials, dimensions, drawings features and amenities are approximate at the time of printing. 4. Actual area may vary from stated area and unit direction may vary from unit to unit. Drawings not to scale E&EO. The developer reserves the right to make revisions to the floor plans and any features, materials, dimensions, drawings and amenities mentioned in this brochure without notice.

## ZAHRA II APARTMENTS

## TOWN SQUARE DUBAI

## 2 BEDROOMS UNIT TYPE 2B-5

SUITE: 78.33 sq.m. / 843 sq.ft.  
BALCONY: 11.34 sq.m. / 122 sq.ft.  
TOTAL BUILT UP AREA: 89.67 sq.m. / 965 sq.ft.



BLOCK	A&B	<p>LEVEL 02-05</p>
UNITS	203,216 303,316 403,416 503,516	

Disclaimer  
1. All room dimensions are in metric and measured to structural elements and exclude wall finishes and construction tolerances. 2. All dimensions have been provided by our consultant architects. 3. All materials, dimensions, drawings features and amenities are approximate at the time of printing. 4. Actual area may vary from stated area and unit direction may vary from unit to unit. Drawings not to scale E&EO. The developer reserves the right to make revisions to the floor plans and any features, materials, dimensions, drawings and amenities mentioned in this brochure without notice.

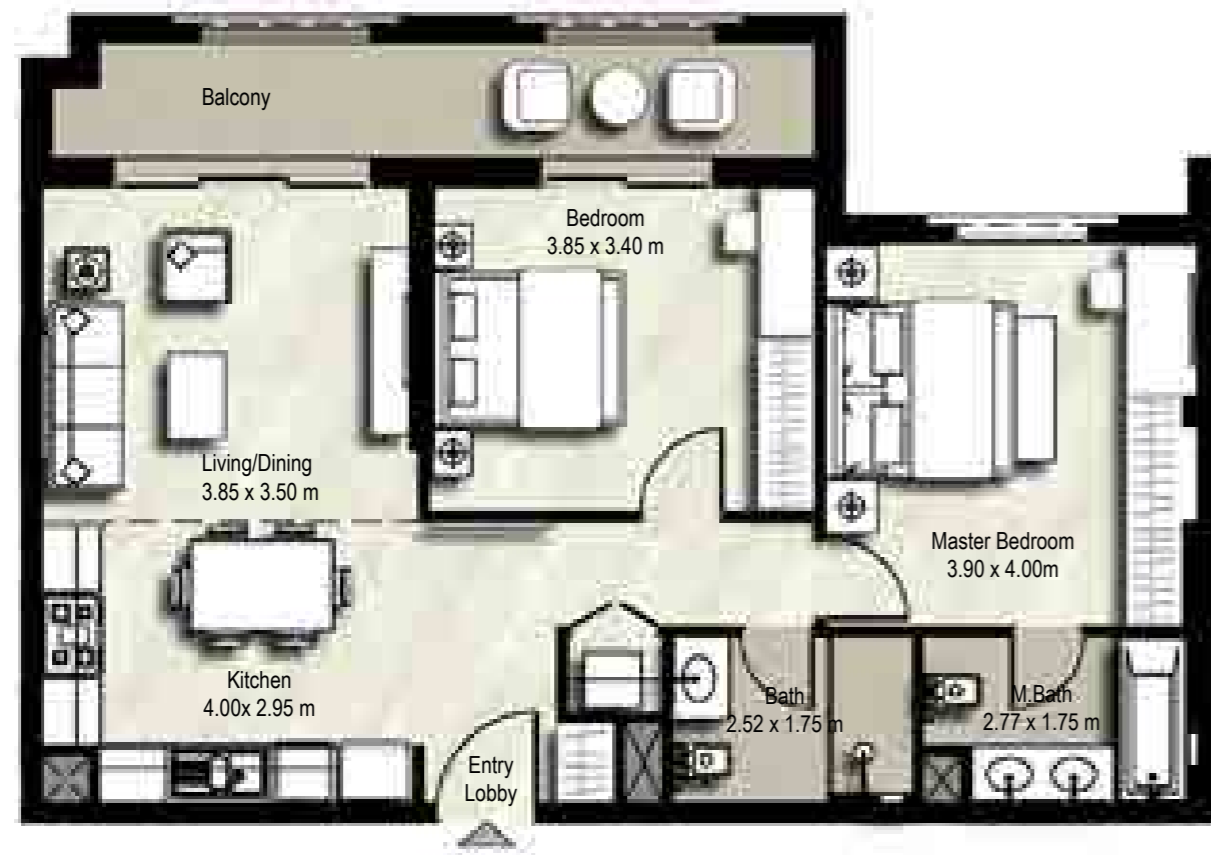
## ZAHRA II APARTMENTS

## TOWN SQUARE DUBAI



## 2 BEDROOMS UNIT TYPE 2B-6

SUITE: 78.13 sq.m. / 841 sq.ft.  
BALCONY: 12.42 sq.m. / 134 sq.ft.  
TOTAL BUILT UP AREA: 90.55 sq.m. / 975 sq.ft.



## ZAHRA II APARTMENTS

### TOWN SQUARE DUBAI

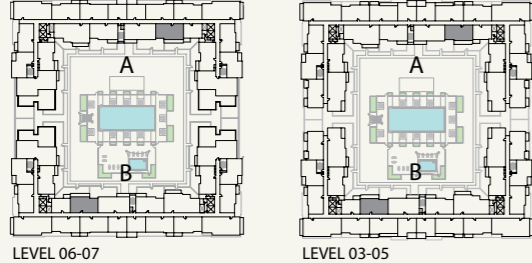
## 2 BEDROOMS UNIT TYPE 2B-7

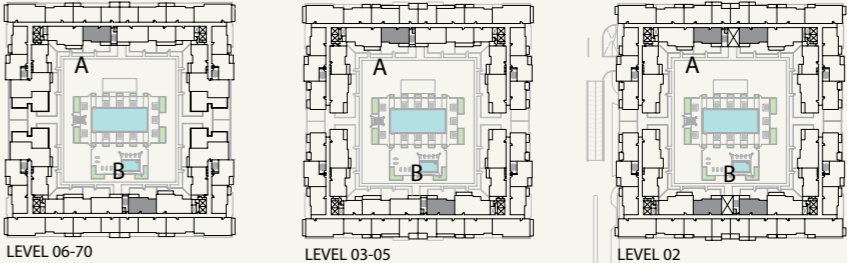
SUITE: 78.29 sq.m. / 843 sq.ft.  
BALCONY: 5.95 sq.m. / 64 sq.ft.  
TOTAL BUILT UP AREA: 84.24 sq.m. / 907 sq.ft.



## ZAHRA II APARTMENTS

### TOWN SQUARE DUBAI

BLOCK	A&B	
UNITS	320,420 520,618, 718	

BLOCK	A & B	
UNITS	220,221, 322 422,522 620,720	

Disclaimer  
1. All room dimensions are in metric and measured to structural elements and exclude wall finishes and construction tolerances. 2. All dimensions have been provided by our consultant architects. 3. All materials, dimensions, drawings features and amenities are approximate at the time of printing. 4. Actual area may vary from stated area and unit direction may vary from unit to unit. Drawings not to scale E&EO. The developer reserves the right to make revisions to the floor plans and any features, materials, dimensions, drawings and amenities mentioned in this brochure without notice.

Disclaimer  
1. All room dimensions are in metric and measured to structural elements and exclude wall finishes and construction tolerances. 2. All dimensions have been provided by our consultant architects. 3. All materials, dimensions, drawings features and amenities are approximate at the time of printing. 4. Actual area may vary from stated area and unit direction may vary from unit to unit. Drawings not to scale E&EO. The developer reserves the right to make revisions to the floor plans and any features, materials, dimensions, drawings and amenities mentioned in this brochure without notice.

## 2 BEDROOMS UNIT TYPE 2B-8

SUITE: 78.06 sq.m. / 840 sq.ft.  
BALCONY: 4.59 sq.m. / 49 sq.ft.  
TOTAL BUILT UP AREA: 82.65 sq.m. / 890 sq.ft.



## ZAHRA II APARTMENTS

### TOWN SQUARE DUBAI

## 2 BEDROOMS UNIT TYPE 2B-9

SUITE: 78.06 sq.m. / 840 sq.ft.  
BALCONY: 3.96 sq.m. / 43 sq.ft.  
TOTAL BUILT UP AREA: 82.02 sq.m. / 883 sq.ft.



## ZAHRA II APARTMENTS

### TOWN SQUARE DUBAI

BLOCK	A&B	<p>LEVEL 06</p>
UNITS	606,611	

BLOCK	A&B	<p>LEVEL 07 LEVEL 06 LEVEL 02-05</p>
UNITS	205,207,212,214 305,307,312,314 405,407,412,414 505,507,512,514 604,613 704,706,711,713	

Disclaimer  
1. All room dimensions are in metric and measured to structural elements and exclude wall finishes and construction tolerances. 2. All dimensions have been provided by our consultant architects. 3. All materials, dimensions, drawings features and amenities are approximate at the time of printing. 4. Actual area may vary from stated area and unit direction may vary from unit to unit. Drawings not to scale E&EO. The developer reserves the right to make revisions to the floor plans and any features, materials, dimensions, drawings and amenities mentioned in this brochure without notice.

Disclaimer  
1. All room dimensions are in metric and measured to structural elements and exclude wall finishes and construction tolerances. 2. All dimensions have been provided by our consultant architects. 3. All materials, dimensions, drawings features and amenities are approximate at the time of printing. 4. Actual area may vary from stated area and unit direction may vary from unit to unit. Drawings not to scale E&EO. The developer reserves the right to make revisions to the floor plans and any features, materials, dimensions, drawings and amenities mentioned in this brochure without notice.

## 2 BEDROOMS UNIT TYPE 2C-1

SUITE: 79.6 sq.m. / 857 sq.ft.  
BALCONY: 6.91 sq.m. / 74 sq.ft.  
TOTAL BUILT UP AREA: 86.57 sq.m. / 932 sq.ft.



BLOCK	A	B	
UNITS	104,116,204,215 304,315,404,415 504,515,603,614 703,714	104,119,204,215 304,315,404,415 504,515,603,614 703,714	

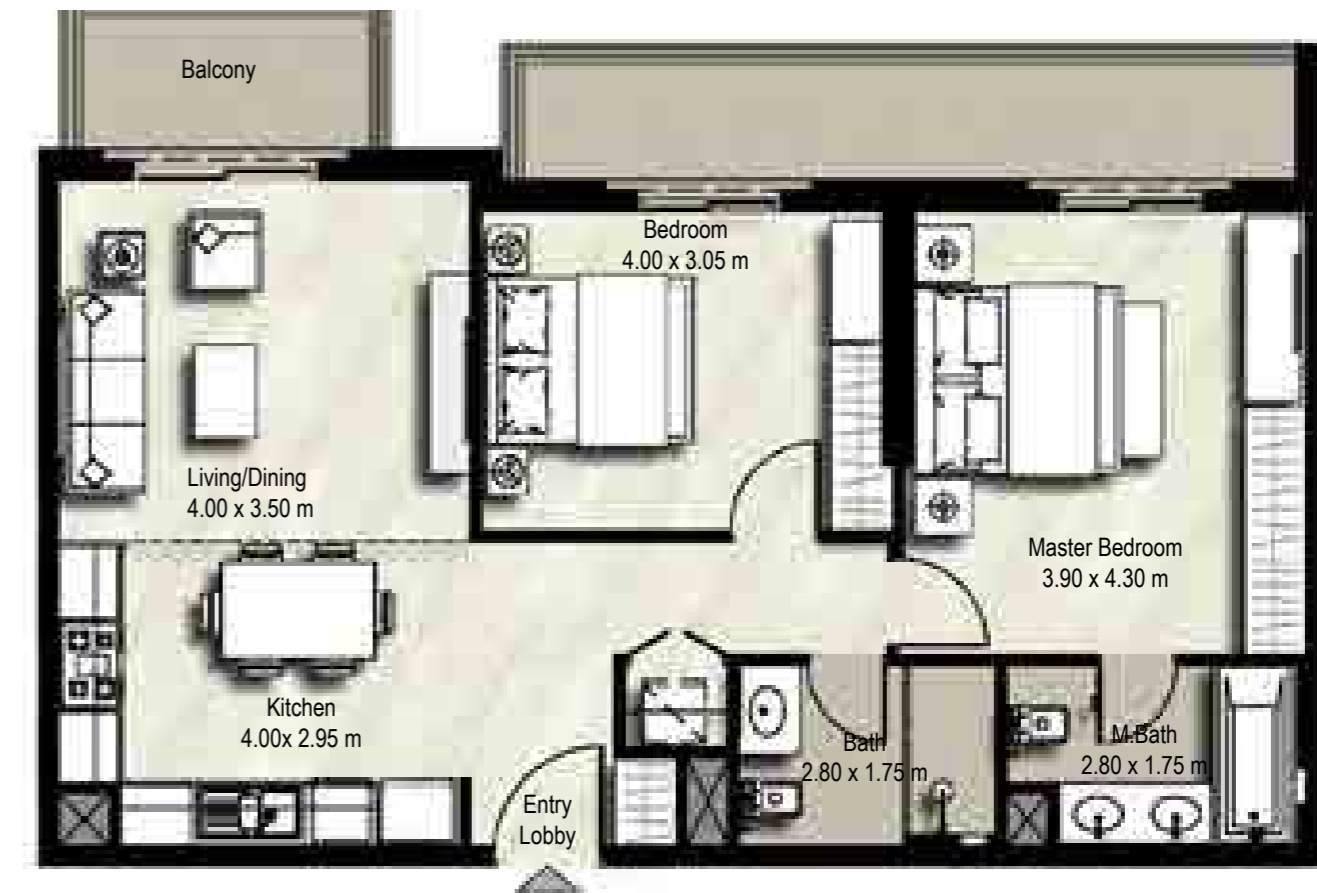
Disclaimer  
1. All room dimensions are in metric and measured to structural elements and exclude wall finishes and construction tolerances. 2. All dimensions have been provided by our consultant architects. 3. All materials, dimensions, drawings features and amenities are approximate at the time of printing. 4. Actual area may vary from stated area and unit direction may vary from unit to unit. Drawings not to scale E&EO. The developer reserves the right to make revisions to the floor plans and any features, materials, dimensions, drawings and amenities mentioned in this brochure without notice.

## ZAHRA II APARTMENTS

## TOWN SQUARE DUBAI

## 2 BEDROOMS UNIT TYPE 2D-1

SUITE: 78.17 sq.m. / 841 sq.ft.  
BALCONY: 14.96 sq.m. / 161 sq.ft.  
TOTAL BUILT UP AREA: 93.13 sq.m. / 1,002 sq.ft.



BLOCK	A&B	
UNITS	308,311	

Disclaimer  
1. All room dimensions are in metric and measured to structural elements and exclude wall finishes and construction tolerances. 2. All dimensions have been provided by our consultant architects. 3. All materials, dimensions, drawings features and amenities are approximate at the time of printing. 4. Actual area may vary from stated area and unit direction may vary from unit to unit. Drawings not to scale E&EO. The developer reserves the right to make revisions to the floor plans and any features, materials, dimensions, drawings and amenities mentioned in this brochure without notice.

## ZAHRA II APARTMENTS

## TOWN SQUARE DUBAI

## 2 BEDROOMS UNIT TYPE 2D-2

SUITE: 78.12 sq.m. / 841 sq.ft.  
BALCONY: 3.96 sq.m. / 43 sq.ft.  
TOTAL BUILT UP AREA: 82.08 sq.m. / 884 sq.ft.



## ZAHRA II APARTMENTS

### TOWN SQUARE DUBAI

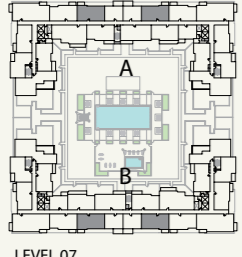
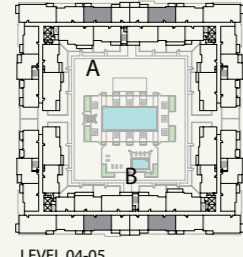
## 2 BEDROOMS UNIT TYPE 2D-3

SUITE: 78.12 sq.m. / 841 sq.ft.  
BALCONY: 4.37 sq.m. / 47 sq.ft.  
TOTAL BUILT UP AREA: 82.49 sq.m. / 888 sq.ft.

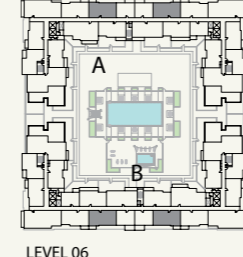


## ZAHRA II APARTMENTS

### TOWN SQUARE DUBAI

BLOCK	A&B		
UNITS	408,411 508,511 701,710	LEVEL 07      LEVEL 04-05	

Disclaimer  
1. All room dimensions are in metric and measured to structural elements and exclude wall finishes and construction tolerances. 2. All dimensions have been provided by our consultant architects. 3. All materials, dimensions, drawings features and amenities are approximate at the time of printing. 4. Actual area may vary from stated area and unit direction may vary from unit to unit. Drawings not to scale E&EO. The developer reserves the right to make revisions to the floor plans and any features, materials, dimensions, drawings and amenities mentioned in this brochure without notice.

BLOCK	A&B	
UNITS	607,610	LEVEL 06

Disclaimer  
1. All room dimensions are in metric and measured to structural elements and exclude wall finishes and construction tolerances. 2. All dimensions have been provided by our consultant architects. 3. All materials, dimensions, drawings features and amenities are approximate at the time of printing. 4. Actual area may vary from stated area and unit direction may vary from unit to unit. Drawings not to scale E&EO. The developer reserves the right to make revisions to the floor plans and any features, materials, dimensions, drawings and amenities mentioned in this brochure without notice.

## 2 BEDROOMS UNIT TYPE 2E-1

SUITE: 90.06 sq.m. / 969 sq.ft.  
BALCONY: 7.44 sq.m. / 80 sq.ft.  
TOTAL BUILT UP AREA: 97.50 sq.m. / 1,049 sq.ft.



BLOCK	A&B	<p>LEVEL 03-07</p>
UNITS	321,421 521,619 719	

Disclaimer  
1. All room dimensions are in metric and measured to structural elements and exclude wall finishes and construction tolerances. 2. All dimensions have been provided by our consultant architects. 3. All materials, dimensions, drawings features and amenities are approximate at the time of printing. 4. Actual area may vary from stated area and unit direction may vary from unit to unit. Drawings not to scale E&EO. The developer reserves the right to make revisions to the floor plans and any features, materials, dimensions, drawings and amenities mentioned in this brochure without notice.

## ZAHRA II APARTMENTS

## TOWN SQUARE DUBAI

## 2 BEDROOMS UNIT TYPE 2F-1

SUITE: 88.49 sq.m. / 953 sq.ft.  
BALCONY: 8.63 sq.m. / 93 sq.ft.  
TOTAL BUILT UP AREA: 97.12 sq.m. / 1,045 sq.ft.



BLOCK	A&B	<p>LEVEL 02</p>
UNITS	208,211	

Disclaimer  
1. All room dimensions are in metric and measured to structural elements and exclude wall finishes and construction tolerances. 2. All dimensions have been provided by our consultant architects. 3. All materials, dimensions, drawings features and amenities are approximate at the time of printing. 4. Actual area may vary from stated area and unit direction may vary from unit to unit. Drawings not to scale E&EO. The developer reserves the right to make revisions to the floor plans and any features, materials, dimensions, drawings and amenities mentioned in this brochure without notice.

## ZAHRA II APARTMENTS

## TOWN SQUARE DUBAI

## 2 BEDROOMS UNIT TYPE 2G-1

SUITE: 76.78 sq.m. / 826 sq.ft.  
BALCONY: 69.09 sq.m. / 744 sq.ft.  
TOTAL BUILT UP AREA: 145.87 sq.m. / 1,570 sq.ft.



BLOCK	A	B	<p>LEVEL 01</p>
UNITS	117	120	

**Disclaimer**  
1. All room dimensions are in metric and measured to structural elements and exclude wall finishes and construction tolerances. 2. All dimensions have been provided by our consultant architects. 3. All materials, dimensions, drawings features and amenities are approximate at the time of printing. 4. Actual area may vary from stated area and unit direction may vary from unit to unit. Drawings not to scale E&EO. The developer reserves the right to make revisions to the floor plans and any features, materials, dimensions, drawings and amenities mentioned in this brochure without notice.

## ZAHRA II APARTMENTS

## TOWN SQUARE DUBAI

## 3 BEDROOMS UNIT TYPE 3A-1

SUITE: 113.62 sq.m. / 1,223 sq.ft.  
BALCONY: 50.71 sq.m. / 546 sq.ft.  
TOTAL BUILT UP AREA: 164.33 sq.m. / 1,769 sq.ft.



BLOCK	A	B	<p>LEVEL 01</p>
UNITS	120,123	123,126	

**Disclaimer**  
1. All room dimensions are in metric and measured to structural elements and exclude wall finishes and construction tolerances. 2. All dimensions have been provided by our consultant architects. 3. All materials, dimensions, drawings features and amenities are approximate at the time of printing. 4. Actual area may vary from stated area and unit direction may vary from unit to unit. Drawings not to scale E&EO. The developer reserves the right to make revisions to the floor plans and any features, materials, dimensions, drawings and amenities mentioned in this brochure without notice.

## ZAHRA II APARTMENTS

## TOWN SQUARE DUBAI



## 3 BEDROOMS UNIT TYPE 3A-2

SUITE: 113.62 sq.m. / 1,223 sq.ft.  
BALCONY: 10.88 sq.m. / 117 sq.ft.  
TOTAL BUILT UP AREA: 124.50 sq.m. / 1,340 sq.ft.



## ZAHRA II APARTMENTS

### TOWN SQUARE DUBAI

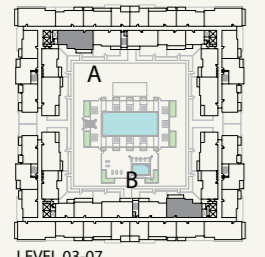
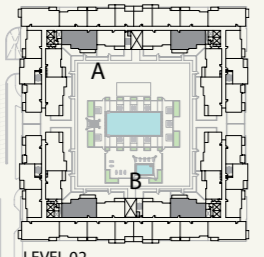
## 3 BEDROOMS UNIT TYPE 3B-1

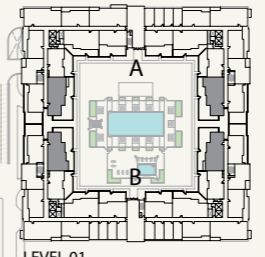
SUITE: 118.70 sq.m. / 1,278 sq.ft.  
BALCONY: 91.09 sq.m. / 980 sq.ft.  
TOTAL BUILT UP AREA: 209.79 sq.m. / 2,258 sq.ft.



## ZAHRA II APARTMENTS

### TOWN SQUARE DUBAI

BLOCK	A&B		
UNITS	219,222 323,423 523,621 721		

BLOCK	A	B	
UNITS	102,118	102,121	

Disclaimer  
1. All room dimensions are in metric and measured to structural elements and exclude wall finishes and construction tolerances. 2. All dimensions have been provided by our consultant architects. 3. All materials, dimensions, drawings features and amenities are approximate at the time of printing. 4. Actual area may vary from stated area and unit direction may vary from unit to unit. Drawings not to scale E&EO. The developer reserves the right to make revisions to the floor plans and any features, materials, dimensions, drawings and amenities mentioned in this brochure without notice.

Disclaimer  
1. All room dimensions are in metric and measured to structural elements and exclude wall finishes and construction tolerances. 2. All dimensions have been provided by our consultant architects. 3. All materials, dimensions, drawings features and amenities are approximate at the time of printing. 4. Actual area may vary from stated area and unit direction may vary from unit to unit. Drawings not to scale E&EO. The developer reserves the right to make revisions to the floor plans and any features, materials, dimensions, drawings and amenities mentioned in this brochure without notice.

# 3 BEDROOMS UNIT TYPE 3B-2

SUITE: 118.61 sq.m. / 1,277 sq.ft.  
BALCONY: 13.42 sq.m. / 144 sq.ft.  
TOTAL BUILT UP AREA: 132.03 sq.m. / 1,421 sq.ft.

# ZAHRA II APARTMENTS

## TOWN SQUARE DUBAI

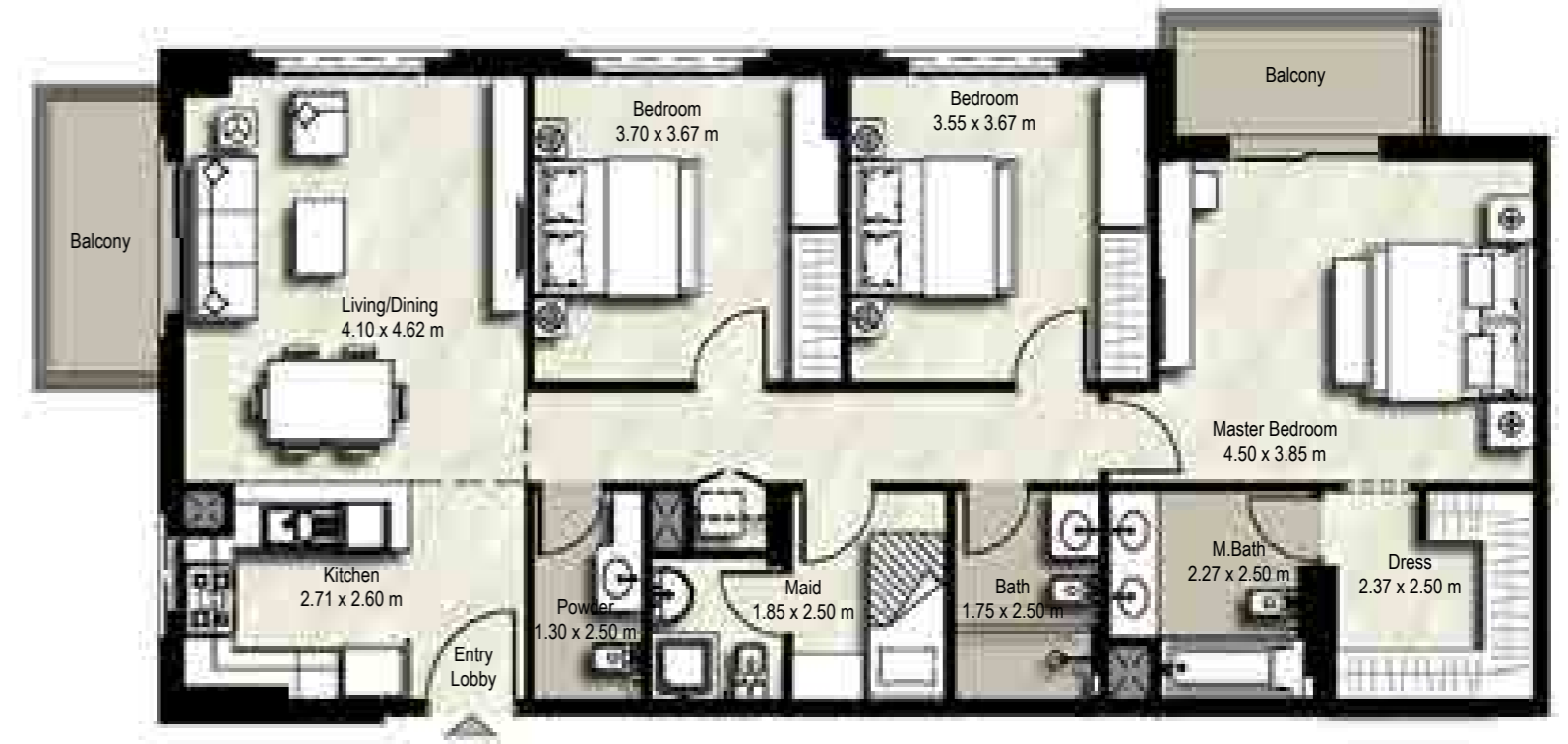


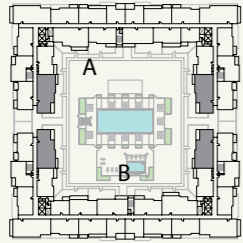
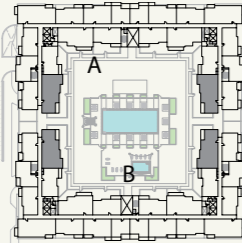
# 3 BEDROOMS UNIT TYPE 3C-1

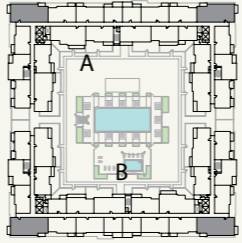
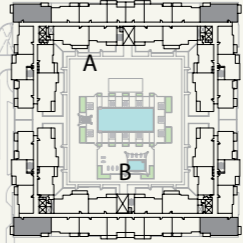
SUITE: 120 sq.m. / 1,292 sq.ft.  
BALCONY: 10.73 sq.m. / 115 sq.ft.  
TOTAL BUILT UP AREA: 130.73 sq.m. / 1,407 sq.ft.

# ZAHRA II APARTMENTS

## TOWN SQUARE DUBAI



BLOCK	A&B		
UNITS	202,217 302,317 402,417 502,517		

BLOCK	A&B		
UNITS	206,213 406,413 506,513 705,712		

Disclaimer  
1. All room dimensions are in metric and measured to structural elements and exclude wall finishes and construction tolerances. 2. All dimensions have been provided by our consultant architects. 3. All materials, dimensions, drawings features and amenities are approximate at the time of printing. 4. Actual area may vary from stated area and unit direction may vary from unit to unit. Drawings not to scale E&EO. The developer reserves the right to make revisions to the floor plans and any features, materials, dimensions, drawings and amenities mentioned in this brochure without notice.

Disclaimer  
1. All room dimensions are in metric and measured to structural elements and exclude wall finishes and construction tolerances. 2. All dimensions have been provided by our consultant architects. 3. All materials, dimensions, drawings features and amenities are approximate at the time of printing. 4. Actual area may vary from stated area and unit direction may vary from unit to unit. Drawings not to scale E&EO. The developer reserves the right to make revisions to the floor plans and any features, materials, dimensions, drawings and amenities mentioned in this brochure without notice.

## 3 BEDROOMS UNIT TYPE 3C-2

SUITE: 119.95 sq.m. / 1,291 sq.ft.  
BALCONY: 11.33 sq.m. / 122 sq.ft.  
TOTAL BUILT UP AREA: 131.28 sq.m. / 1,413 sq.ft.

**ZAHRA II**  
APARTMENTS

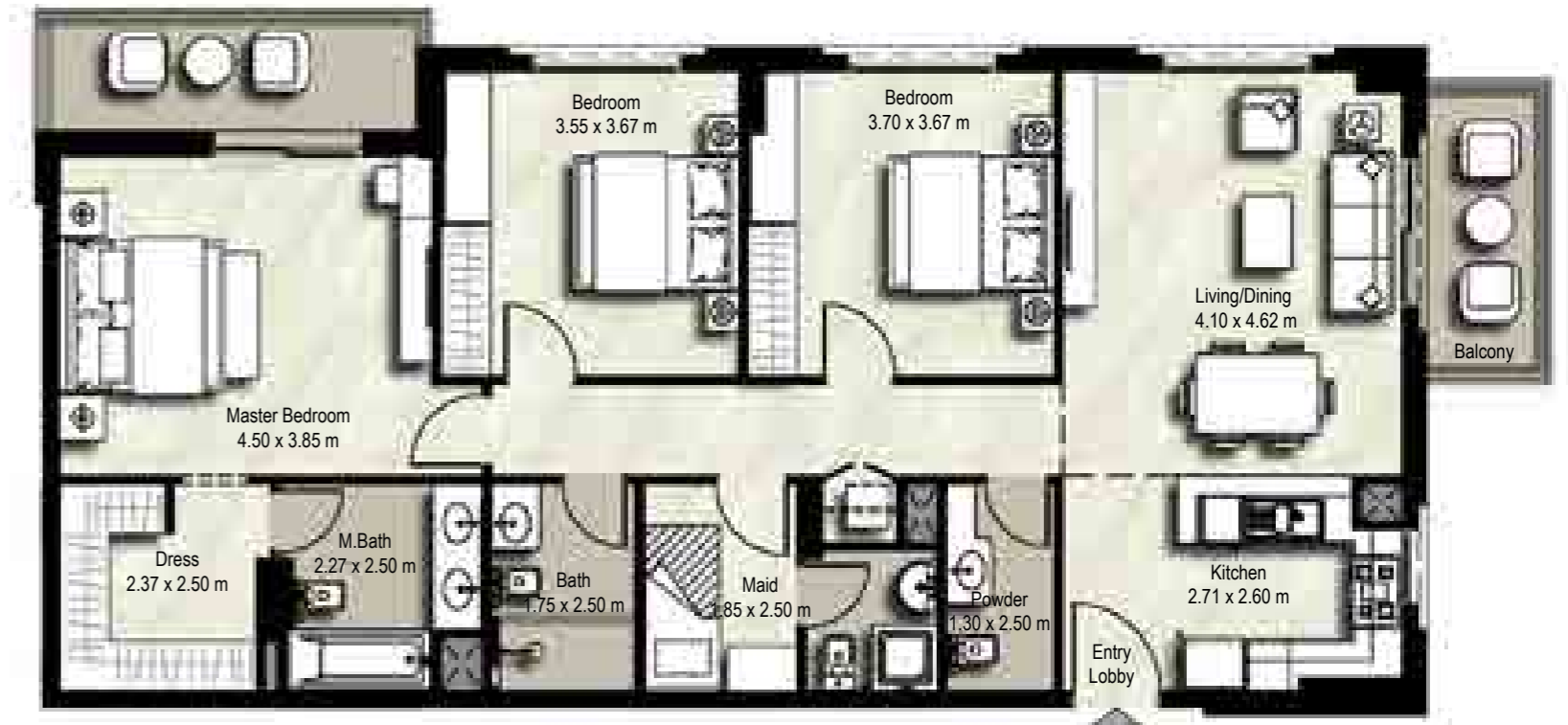
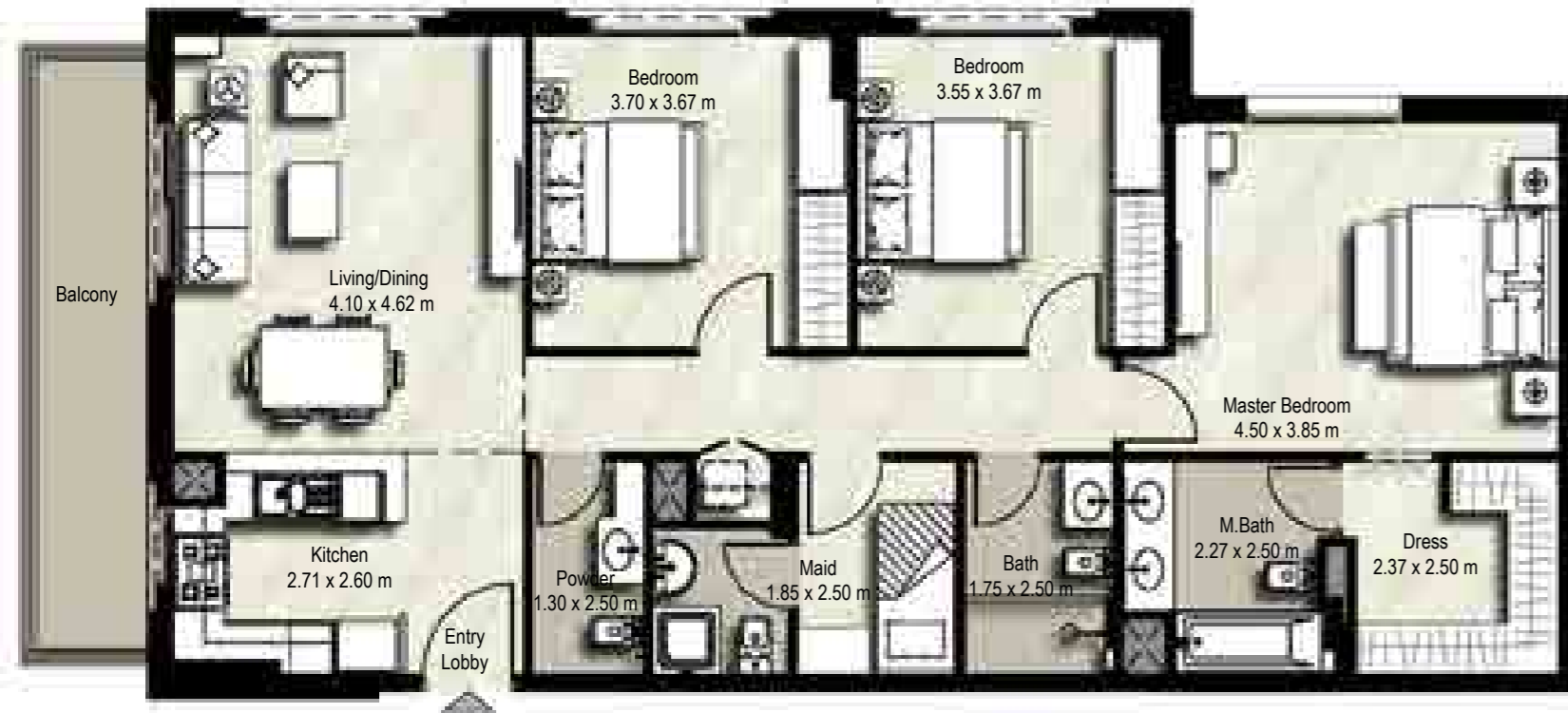
**TOWN**  
**SQUARE**  
DUBAI

## 3 BEDROOMS UNIT TYPE 3C-3

SUITE: 120.31 sq.m. / 1,295 sq.ft.  
BALCONY: 12.77 sq.m. / 137 sq.ft.  
TOTAL BUILT UP AREA: 133.08 sq.m. / 1,432 sq.ft.

**ZAHRA II**  
APARTMENTS

**TOWN**  
**SQUARE**  
DUBAI



BLOCK	A&B	<p>LEVEL 03 &amp; 06</p>
UNITS	306,313 605,612	

BLOCK	A	B	<p>LEVEL 01</p>
UNITS	106,114	160,117	

Disclaimer  
1. All room dimensions are in metric and measured to structural elements and exclude wall finishes and construction tolerances. 2. All dimensions have been provided by our consultant architects. 3. All materials, dimensions, drawings features and amenities are approximate at the time of printing. 4. Actual area may vary from stated area and unit direction may vary from unit to unit. Drawings not to scale E&EO. The developer reserves the right to make revisions to the floor plans and any features, materials, dimensions, drawings and amenities mentioned in this brochure without notice.

Disclaimer  
1. All room dimensions are in metric and measured to structural elements and exclude wall finishes and construction tolerances. 2. All dimensions have been provided by our consultant architects. 3. All materials, dimensions, drawings features and amenities are approximate at the time of printing. 4. Actual area may vary from stated area and unit direction may vary from unit to unit. Drawings not to scale E&EO. The developer reserves the right to make revisions to the floor plans and any features, materials, dimensions, drawings and amenities mentioned in this brochure without notice.

# 3 BEDROOMS UNIT TYPE 3C-4

SUITE: 120.39 sq.m. / 1,296 sq.ft.  
BALCONY: 8.97 sq.m. / 97 sq.ft.  
TOTAL BUILT UP AREA: 129.36 sq.m. / 1,392 sq.ft.



BLOCK	A	
UNITS	108	

Disclaimer  
1. All room dimensions are in metric and measured to structural elements and exclude wall finishes and construction tolerances. 2. All dimensions have been provided by our consultant architects. 3. All materials, dimensions, drawings features and amenities are approximate at the time of printing. 4. Actual area may vary from stated area and unit direction may vary from unit to unit. Drawings not to scale E&EO. The developer reserves the right to make revisions to the floor plans and any features, materials, dimensions, drawings and amenities mentioned in this brochure without notice.

# ZAHRA II APARTMENTS

## TOWN SQUARE DUBAI

# 3 BEDROOMS UNIT TYPE 3D-1

SUITE: 130.66 sq.m. / 1,406 sq.ft.  
BALCONY: 110.64 sq.m. / 1,191 sq.ft.  
TOTAL BUILT UP AREA: 241.30 sq.m. / 2,597 sq.ft.



BLOCK	A&B	
UNITS	602,615	

Disclaimer  
1. All room dimensions are in metric and measured to structural elements and exclude wall finishes and construction tolerances. 2. All dimensions have been provided by our consultant architects. 3. All materials, dimensions, drawings features and amenities are approximate at the time of printing. 4. Actual area may vary from stated area and unit direction may vary from unit to unit. Drawings not to scale E&EO. The developer reserves the right to make revisions to the floor plans and any features, materials, dimensions, drawings and amenities mentioned in this brochure without notice.

# ZAHRA II APARTMENTS

## TOWN SQUARE DUBAI

**3 BEDROOMS**  
**UNIT TYPE 3E-1**

SUITE: 111.91 sq.m. / 1,205 sq.ft.  
BALCONY: 24.99 sq.m. / 269 sq.ft.  
TOTAL BUILT UP AREA: 136.90 sq.m. / 1,474 sq.ft.

**ZAHRA II**  
APARTMENTS

TOWN  
**SQUARE**  
DUBAI



TOWN  
**SQUARE**  
DUBAI

**ZAHRA II**  
APARTMENTS

BLOCK	A&B	<p>LEVEL 07</p>
UNITS	702,715	

Disclaimer  
1. All room dimensions are in metric and measured to structural elements and exclude wall finishes and construction tolerances. 2. All dimensions have been provided by our consultant architects. 3. All materials, dimensions, drawings features and amenities are approximate at the time of printing. 4. Actual area may vary from stated area and unit direction may vary from unit to unit. Drawings not to scale E&EO. The developer reserves the right to make revisions to the floor plans and any features, materials, dimensions, drawings and amenities mentioned in this brochure without notice.