

TOWN  
SQUARE  
DUBAI  
by NISHAMA

AN SEEM  
TOWNHOUSES





# 3 BED ROOM

MID UNIT  
TYPE 1



GROUND FLOOR



FIRST FLOOR

| AREA                | MIN (SQ. FT.) | MAX (SQ. FT.) |
|---------------------|---------------|---------------|
| TOTAL BUILT UP AREA | 2,219.30      | 2,241.58      |







# 3 BED ROOM

MID UNIT  
TYPE 2



GROUND FLOOR



FIRST FLOOR

| AREA                       | MIN (SQ. FT.)   | MAX (SQ. FT.)   |
|----------------------------|-----------------|-----------------|
| <b>TOTAL BUILT UP AREA</b> | <b>2,131.15</b> | <b>2,153.64</b> |

DISCLAIMER: (1) All room dimensions are in metric and measured to structural elements and exclude wall finishes and construction tolerances. (2) All dimensions have been provided by our consultant architects (3) All materials, dimensions, drawings features and amenities are approximate at the time of printing. (4) Actual area may vary from stated area. Drawings not to scale E&EO. The developer reserves the right to make revisions to the floor plans and any features, materials, dimensions, drawings and amenities mentioned in this brochure without notice.







**4 BED ROOM**  
END UNIT  
TYPE 3

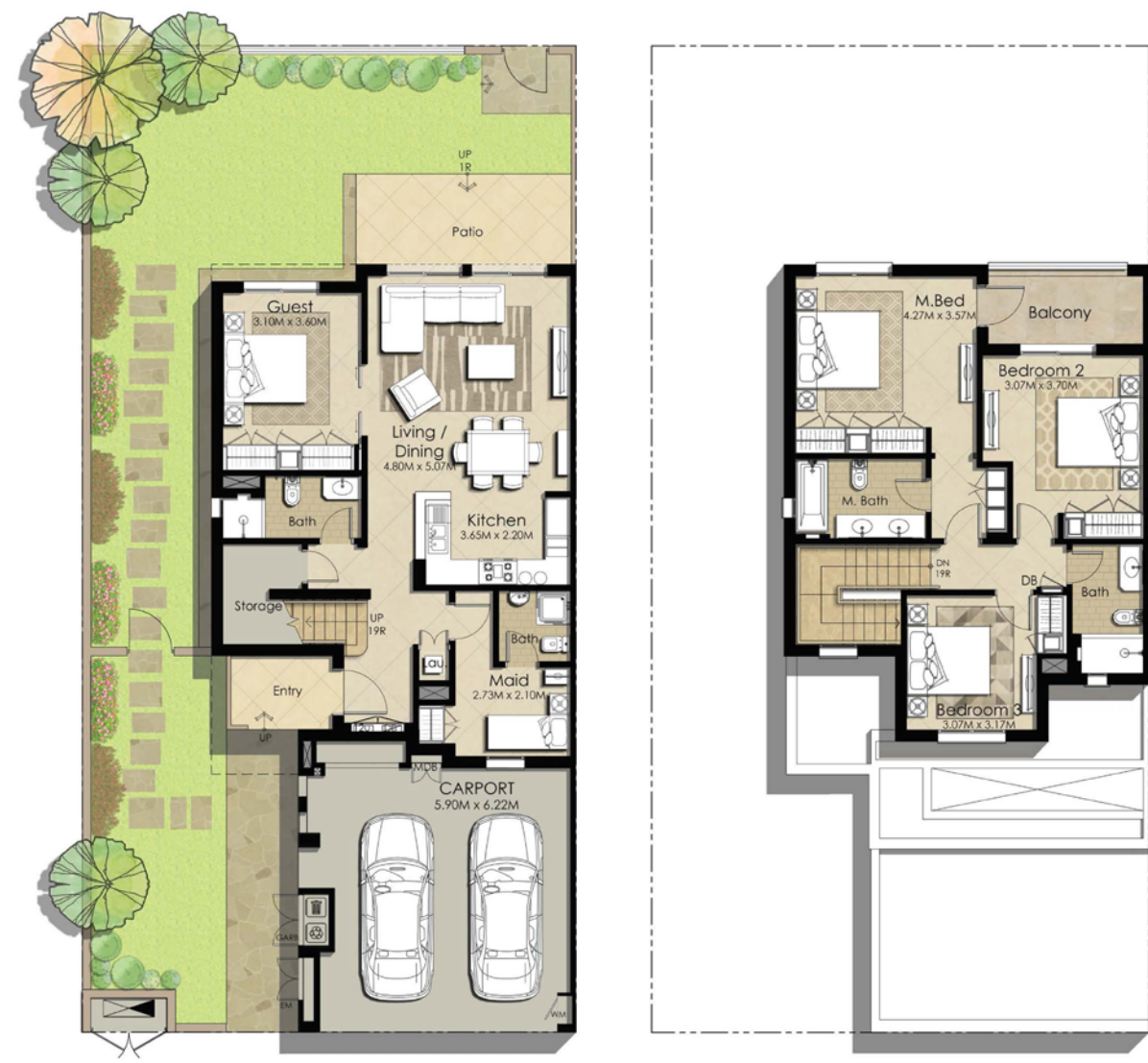


GROUND FLOOR

FIRST FLOOR

| AREA                | SQ. FT.  |
|---------------------|----------|
| TOTAL BUILT UP AREA | 2,446.64 |

**4 BED ROOM**  
END UNIT  
TYPE 4



GROUND FLOOR

FIRST FLOOR

| AREA                | MIN (SQ. FT.) | MAX (SQ. FT.) |
|---------------------|---------------|---------------|
| TOTAL BUILT UP AREA | 2,428.98      | 2,429.09      |

DISCLAIMER: (1) All room dimensions are in metric and measured to structural elements and exclude wall finishes and construction tolerances. (2) All dimensions have been provided by our consultant architects (3) All materials, dimensions, drawings features and amenities are approximate at the time of printing. (4) Actual area may vary from stated area. Drawings not to scale E&EO. The developer reserves the right to make revisions to the floor plans and any features, materials, dimensions, drawings and amenities mentioned in this brochure without notice.

DISCLAIMER: (1) All room dimensions are in metric and measured to structural elements and exclude wall finishes and construction tolerances. (2) All dimensions have been provided by our consultant architects (3) All materials, dimensions, drawings features and amenities are approximate at the time of printing. (4) Actual area may vary from stated area. Drawings not to scale E&EO. The developer reserves the right to make revisions to the floor plans and any features, materials, dimensions, drawings and amenities mentioned in this brochure without notice.





# AL SEEM TOWNHOUSES



TownSquareDXB

800-NSHAMA (674262)

NSHAMA Sales Centre, Mohammed bin Rashid Boulevard, Downtown Dubai, UAE

NSHAMA.AE

TOWN  
**SQUARE**  
DUBAI

---

by NSHAMA 