

ENJOY YOUR LIFE

HAYAT II

TOWN  
SQUARE

NSHAMA<sup>®</sup>



## HAYAT TOWNHOUSES II TYPE 1

3 BEDROOMS

TOTAL BUILT-UP AREA: 207.72 M<sup>2</sup> | 2235.88 FT<sup>2</sup>



GROUND FLOOR



FIRST FLOOR

Disclaimer

1. All room dimensions are in metric and measured to structural elements and exclude wall finishes and construction tolerances. 2. All dimensions have been provided by our consultant architects. 3. All materials, dimensions, drawings features and amenities are approximate at the time of printing. 4. Actual area may vary from stated area and unit direction may vary from unit to unit. Drawings not to scale E&EO. The developer reserves the right to make revisions to the floor plans and any features, materials, dimensions, drawings and amenities mentioned in this brochure without notice.

## HAYAT TOWNHOUSES II TYPE 2

3 BEDROOMS

TOTAL BUILT-UP AREA: 199.39 M<sup>2</sup> | 2146.22 FT<sup>2</sup>



GROUND FLOOR



FIRST FLOOR

Disclaimer

1. All room dimensions are in metric and measured to structural elements and exclude wall finishes and construction tolerances. 2. All dimensions have been provided by our consultant architects. 3. All materials, dimensions, drawings features and amenities are approximate at the time of printing. 4. Actual area may vary from stated area and unit direction may vary from unit to unit. Drawings not to scale E&EO. The developer reserves the right to make revisions to the floor plans and any features, materials, dimensions, drawings and amenities mentioned in this brochure without notice.

## HAYAT TOWNHOUSES II TYPE 3

4 BEDROOMS

TOTAL BUILT-UP AREA: 225.03 M<sup>2</sup> | 2422.20 FT<sup>2</sup>



GROUND FLOOR



FIRST FLOOR

Disclaimer

1. All room dimensions are in metric and measured to structural elements and exclude wall finishes and construction tolerances. 2. All dimensions have been provided by our consultant architects. 3. All materials, dimensions, drawings features and amenities are approximate at the time of printing. 4. Actual area may vary from stated area and unit direction may vary from unit to unit. Drawings not to scale E&EO. The developer reserves the right to make revisions to the floor plans and any features, materials, dimensions, drawings and amenities mentioned in this brochure without notice.

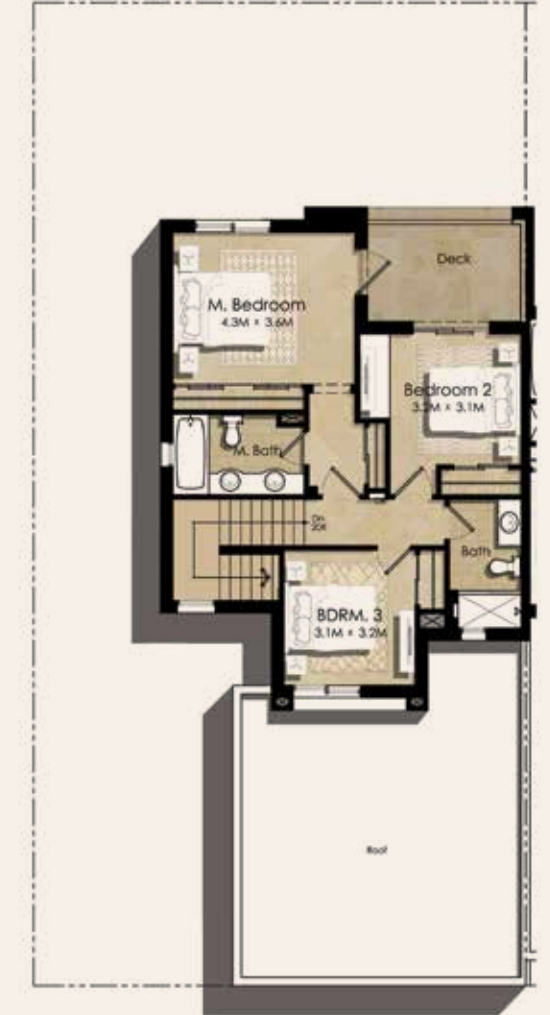
## HAYAT TOWNHOUSES II TYPE 4

4 BEDROOMS

TOTAL BUILT-UP AREA: 225.14 M<sup>2</sup> | 2423.39 FT<sup>2</sup>



GROUND FLOOR



FIRST FLOOR

Disclaimer

1. All room dimensions are in metric and measured to structural elements and exclude wall finishes and construction tolerances. 2. All dimensions have been provided by our consultant architects. 3. All materials, dimensions, drawings features and amenities are approximate at the time of printing. 4. Actual area may vary from stated area and unit direction may vary from unit to unit. Drawings not to scale E&EO. The developer reserves the right to make revisions to the floor plans and any features, materials, dimensions, drawings and amenities mentioned in this brochure without notice.



## HAYAT TOWNHOUSES II TYPE 5

3 BEDROOMS

TOTAL BUILT-UP AREA: 206.88 M<sup>2</sup> | 2226.84 FT<sup>2</sup>



GROUND FLOOR



FIRST FLOOR

Disclaimer

1. All room dimensions are in metric and measured to structural elements and exclude wall finishes and construction tolerances. 2. All dimensions have been provided by our consultant architects. 3. All materials, dimensions, drawings features and amenities are approximate at the time of printing. 4. Actual area may vary from stated area and unit direction may vary from unit to unit. Drawings not to scale E&EO. The developer reserves the right to make revisions to the floor plans and any features, materials, dimensions, drawings and amenities mentioned in this brochure without notice.

## HAYAT TOWNHOUSES II TYPE 6

3 BEDROOMS

TOTAL BUILT-UP AREA: 205.43 M<sup>2</sup> | 2211.23 FT<sup>2</sup>



GROUND FLOOR



FIRST FLOOR

Disclaimer

1. All room dimensions are in metric and measured to structural elements and exclude wall finishes and construction tolerances. 2. All dimensions have been provided by our consultant architects. 3. All materials, dimensions, drawings features and amenities are approximate at the time of printing. 4. Actual area may vary from stated area and unit direction may vary from unit to unit. Drawings not to scale E&EO. The developer reserves the right to make revisions to the floor plans and any features, materials, dimensions, drawings and amenities mentioned in this brochure without notice.

## HAYAT TOWNHOUSES II TYPE 7

4 BEDROOMS

TOTAL BUILT-UP AREA: 224.96 M<sup>2</sup> | 2421.45 FT<sup>2</sup>



GROUND FLOOR



FIRST FLOOR

Disclaimer

1. All room dimensions are in metric and measured to structural elements and exclude wall finishes and construction tolerances. 2. All dimensions have been provided by our consultant architects. 3. All materials, dimensions, drawings features and amenities are approximate at the time of printing. 4. Actual area may vary from stated area and unit direction may vary from unit to unit. Drawings not to scale E&EO. The developer reserves the right to make revisions to the floor plans and any features, materials, dimensions, drawings and amenities mentioned in this brochure without notice.

## HAYAT TOWNHOUSES II TYPE 8

4 BEDROOMS

TOTAL BUILT-UP AREA: 218.94 M<sup>2</sup> | 2356.65 FT<sup>2</sup>



GROUND FLOOR



FIRST FLOOR

Disclaimer

1. All room dimensions are in metric and measured to structural elements and exclude wall finishes and construction tolerances. 2. All dimensions have been provided by our consultant architects. 3. All materials, dimensions, drawings features and amenities are approximate at the time of printing. 4. Actual area may vary from stated area and unit direction may vary from unit to unit. Drawings not to scale E&EO. The developer reserves the right to make revisions to the floor plans and any features, materials, dimensions, drawings and amenities mentioned in this brochure without notice.



